

Comcon Software Solutions

Samvad Teleprompter



User Manual

Introduction to Samvad

Opening Samvad

Samvad Shortcut should be automatically created on your desktop at the time of installation. If it does not, follow the steps below:

1. Click **Start** on the Windows task bar.
2. Select **Programs**.
3. Select **Samvad**.

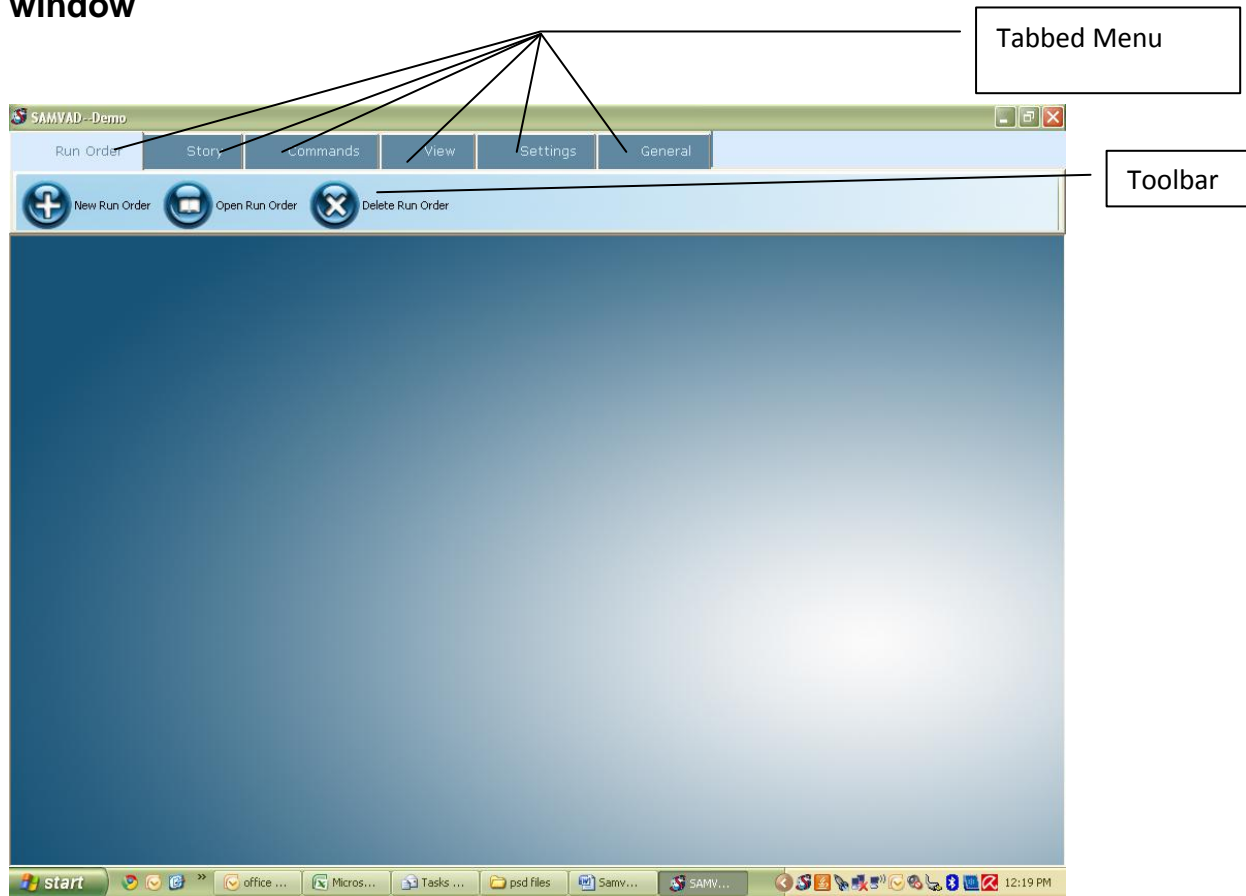
The Samvad Window

Samvad enables you to create, edit, and run scripts of any length, at multiple speeds, and in a variety of colors. The Samvad software can be divided into three main segments:

- **Run order:** **Collection** of stories.
- **Control Panel:** Used for prompting operations
- **Editor:** Used to import, write, and edit scripts.

The Samvad Menus and Toolbars

Samvad has tabbed menus and toolbars, which appear at the top of main window



Samvad Main Window

Run Order Tab: Buttons and menus



New Run order: Creates a blank run order using the create dialog box



Open Run order: Opens an existing run order using the Open run order dialog box.



Delete Run order: Deletes an existing run order using delete runorder dialog box.



Schedule Run Order: Schedules an existing runorder using scheduling dialog box.

Story Tab: button and menus



New: Opens a blank story in the editor



Edit: Opens the currently selected/highlighted story of the run order, in editor for editing.



Old Story: Adds an existing story into the current run order using the old story dialog box.



Add Image Story: If camera or scanner is attached to the system, then it opens up the relevant dialog box for taking pictures/scans and adding them to the currently open run order.



Import: Imports html/word/text file, and adds it to the currently open run order. Formatting in imported files may result in improper functioning. Hence, it is recommended to check imported files once before final prompting.



Delete : Deletes the highlighted/selected story from the run order.



Move UP: Moves the selected/highlighted story one position up in the run order.



Move Down: Moves the selected/highlighted story one position down in the run order.

Commands Tab: buttons and menus:



Play: Starts prompting of the currently open run order.



Pause: Pauses the run order currently being prompted. Prompting can be started again by pressing play. Prompting will start from the exact position where it was paused.



Stop: Stops the currently playing run order. Once stopped, the run order will begin prompting from the start, when play is pressed.



Skip: Takes the currently playing story to its end position.



Breaking News: This option is used for inserting stories in a run order which is already playing. It opens up a blank editor for scripting the story. On saving a dialogue box asks for the

position of the story. The story is inserted at the specified position or at the earliest position possible, if the specified position is no longer available.



Scroll Up: Sets the scrolling direction upwards.



Scroll Down: Sets the scrolling direction downwards.



Type N Play: Type N Play allows you to prompt as you write the story in editor. This feature is enabled only when a run order is playing. Type N play, stops the playing runorder and opens an editor windows for scripting the story. Prompting starts as soon as the editor is open, and whatever is written on the editor thereafter is prompted in real time. To go back to the preiously playing run order press resume run order button on the editor or the main window. Once resume run order is pressed, the editor is no longer available for editing. Entire text in editor is prompted and thereafter prompting continues from the exact point where control was shifted to type N Play.



Live Edit: Live Edit is similar to Type N Prompt in the sense that it allows you to edit text in real time. The major difference being, that instead of scripting a new story, live edit gives you the option of editing the currently playing story. Live Edit opens up the currently playing story in the editor, and is similar to Type N prompt thereon. On completion of Live Edit, run order resumes from the next story in the run order.

View Tab: buttons and menus



TP Preview: TP Preview enables the preview screen for the operator/producer. Preview screen is meant for guiding the operator by replicating the screen visible to the reader. Operator can con control position, speed etc using the preview screen.



Control Panel: Control Panel is a small floating control, that can be used to control the prompting operations of the teleprompter. Pressing “ Control Pnale” button, enabled the control panel.



Story Preview: Story Preview is a small window that opens up side by side the run order. It displays the content of the highlighted/selected story in the runorder. Story preview windows can be enabled/ disabled using the story preview button.

Settings Tab: Buttons and Menus



Mirrored: Sets the Teleprompter’s prompting setting to mirrored. This is the normal setting to be used when the teleprompter is being used with its glass hood.



Unmirrored: Sets the Teleprompter’s prompting setting to unmirrored. This is the normal setting to be used when the teleprompter is being used without its glass hood.



MOS: Opens up the MOS settings window. See *MOS Settings* for more details.



Users: Opens up user management dialog. Users can be added/deleted/modified using it. See user management for more detail.



Readers: Opens up the reader management dialog box. Readers can be created/edited/deleted using it. See Reader management for more detail.



Hand Control: Enables/Disables the USB hand control device.



Foot Control: Enables/Disables the USB foot control device.



Serial Foot control: Enables/Disables the serial foot control device.

General Tab: Buttons and menus:



Uninstall: Uninstalls the software from your system and generates an un-installation key.



Help: Opens Samvad Help.



About: Displays information about the software.



Exit : Saves current settings and exits the application.

Samvad Basics

Customizing The Samvad Window

Repositioning Run order Columns

Samvad run order's fields can be customized as per the user preference. To change the order of fields:

1. Click and hold on the area in the column header.
 2. Drag it to the desired location.
 3. Release the mouse button once it is in the desired location.
 4. Repeat steps 1-3 until all the columns are where you'd like them to be.
- Run order columns will appear in this order only, until you re-position them again.

Resizing Windows

To resize your runorder/editor window, just position the cursor in the corner or on the sides of the window until you see a double-arrow symbol then resize the window accordingly.

Samvad Basics

Opening a Run order

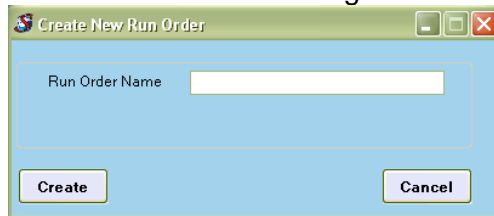
1. Opening a new Run order

- a. Select Run order Tab

- b. Click On 'New Run order' button



- c. A Create Run Order Dialogue Box will appear. Enter the details, and click OK.

A dialog box titled "Create New Run Order" with a light blue background. It contains a text input field labeled "Run Order Name". At the bottom, there are two buttons: "Create" and "Cancel".

Create Run Order Dialogue

- d. A blank run order will be opened.

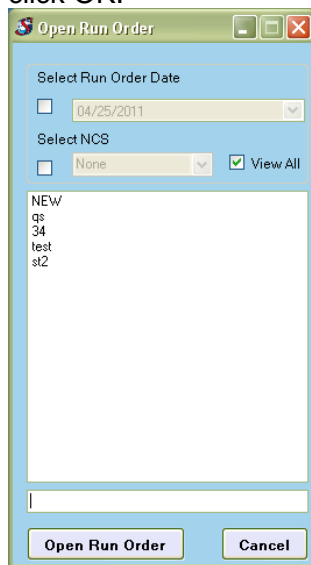
2. Opening an existing run order

- a. Select Run order Tab

- b. Click On 'Open Run order' button



- c. Open Run Order Dialogue Box will appear. Select the Run order from the list and click OK.

A dialog box titled "Open Run Order" with a light blue background. It contains a "Select Run Order Date" section with a checkbox and a dropdown menu showing "04/25/2011". Below that is a "Select NCS" section with a checkbox and a dropdown menu showing "None", and a checked checkbox for "View All". A list box contains the text "NEW", "qs", "34", "test", and "st2". At the bottom, there are two buttons: "Open Run Order" and "Cancel".

Open Run Order Dialogue

- d. Selected Run order will be opened.

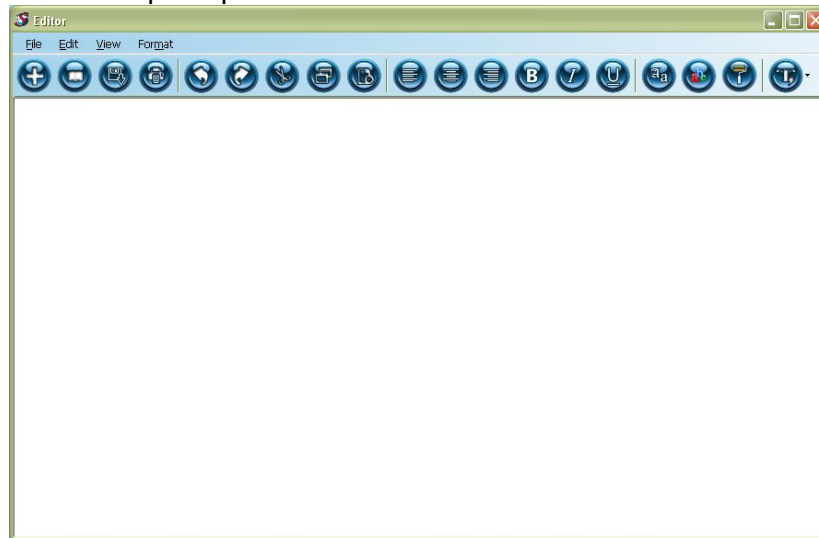
Editing a Run order

1. Adding a new story

- a. Select Story Tab



- b. Click on New Button
- c. A blank Editor will open up.



Blank Editor

- d. Write the text of the story.



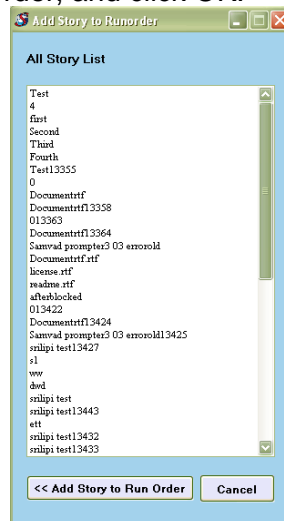
- e. When you are done editing, Click Save .
- f. A dialogue box will appear. Enter the story name(story names should be unique), and click OK.
- g. Editor will close , and story will be added to the open run order.

2. Adding an old story

- a. Select Story Tab



- b. Click on Old Story Button
- c. A dialogue box with list of all existing stories will open up. Select the story you wish to add to the open run order, and click OK.



Old story Dialogue Box

- d. The story will be added to the open run order.

3. Importing a story

- a. Select Story Tab



- b. Click Import Button
- c. A file browser will appear. Select the file you wish to add as story.
- d. The file will be added to the runorder.

4. Adding an Image story

- a. Select Story Tab



- b. Click Image story Button
- c. If an installed web camera or scanner is detected on the system, its interface will appear. Use the interface to click a picture or take scans. Save them, in Directory C:/Samvad. Click ok.
- d. Files will be added to the run order and removed from the directory c:/Samvad.

5. Editing an existing story

To edit an existing story, do either of the following:

- a. Double click the story, and it will open up in the editor.
 - b. When You are done editing, Click Save to save the changes.
- OR
- a. Select the story in the run order, so that its row is highlighted.
 - b. Select the Story Tab.



- c. Click the edit button
- d. Story will open up in editor for editing.



- e. When you are done. Click save to save the changes.

6. Re-ordering Stories

To re-order stories in a Run order, do the following.

- a. Move Story UP

- a. Select the story in the run order, so that its row is highlighted.
- b. Select the Story Tab.



- c. Click Move Up button
- d. Story will be moved one position higher in the run order.

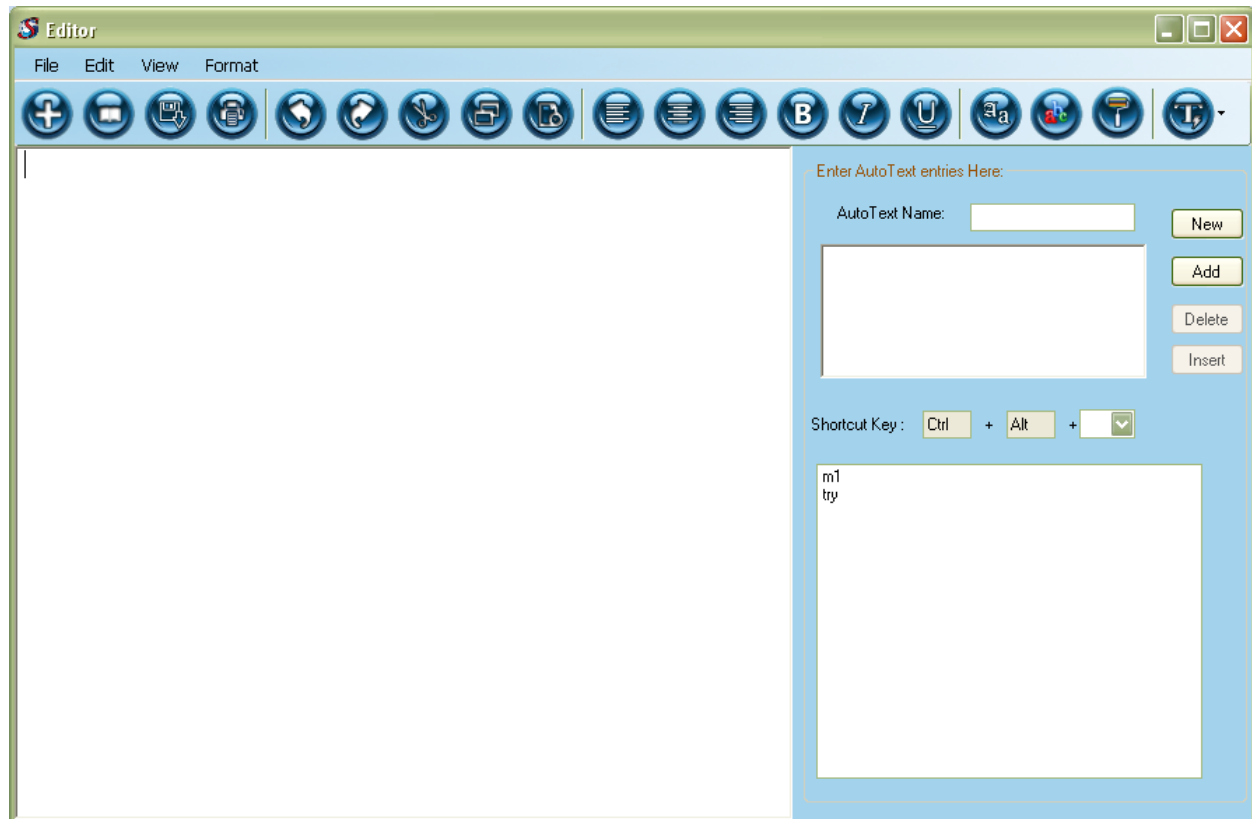
- b. Move Story Down

- i) Select the story in the run order, so that its row is highlighted.
- ii) Select the Story Tab.



- iii) Click Move Down button
- iv) Story will be moved one position lower in the run order.

Editor Operations



Editor Window

Formatting The Text

To change text formatting, use the Font, Font Color and Background color Tab dialog boxes from the **menu**. You can also use the toolbar for some formatting shortcuts.

Before you apply formatting, select the text you want changed:

- To select the entire Script, select **Select All** from the **Edit** menu. Alternatively you can use Ctrl+A.
- To select part of the text, click and drag the mouse over the text you want formatted.

Changing Fonts

Click the Fonts button on Editor Toolbar or Select Font from Format menu on Editor window.

Use the **Font** dialog box to change the font type and size.

To change the font (using the dialog box):

- (1) Select **Font** from the **Format** menu to open the **Font** dialog box.

OR.

To change the font (using the toolbar):

- (1) Click the Fonts button to open the Font dialog box.

- (2) Make any necessary adjustments to the Font's typeface, style, and size in the appropriate lists.

Use the following toolbar buttons for styling the script

- **B** , *I* , or U
- Font Color 
- Background Color 

Saving a Story

To save under the current file name:

1. Click  .

OR

2. Select **Save** from the **File** menu.

To save a script locally on the system:

1. Select **Save As** from the **File** menu. This opens the **Save As** dialog box.
2. Browse to the location, where you wish to save the file.
3. In the **File name** box, enter the file name.
4. Click **Save**.

The file will be saved at the selected location as an html file.

AutoText :

This feature enables quick insertion of frequently used lines and phrases.







Auto text entries can be easily created, saved and assigned shortcut keys. To view auto text toolbar, select Auto text from the View menu in editor. Auto text Toolbar will appear on the right side of the editor.

To add an auto text entry, on auto text toolbar, select new and then write the text in the auto text toolbars editor. Assign a shortcut key and press save. The new entry will appear start appearing in the list of auto texts, visible at the bottom left of the auto text toolbar.

Teleprompting Operations

Prerequisites: Run Order to be prompted, should be open. Hardware should be properly connected.

To start prompting, do the following:

1. Pre prompting Settings: Following settings should be done before beginning to prompt.
 - i) Setting TP Preview: TP Preview allows the operator to view the display visible to reader. This preview is completely synchronized with the reader's display. TP preview can be enabled/disabled as per choice. To enable/disable TP preview do the following:
 - a. Go to Settings Tab
 - b. If you see "TP Preview" , then click it to enable TP Preview, else do nothing. TP Preview will be enabled.
 - c. If you see "Disable TP Preview" button, then click it to disable TP Preview, else do nothing. TP Preview will be disabled.
 - ii) Setting, mirrored/un-mirrored settings
 - a. Go To Settings Tab
 - b. To enable mirrored display, click mirrored button . By default, mirrored option is enabled. Mirrored text should be used, when TP is being used with glass hood.
 - c. To disable mirrored display, click un-mirrored button . Mirrored setting should be disabled only, when teleprompter is not being used with glass hood.
 - iii) Setting Font size
 - a. Font size can be set from control panel. If Control panel is not visible, then :
 - 1) Go to View tab.
 - 2) Click Control Panel button . A square panel should become visible.
 - b. Set the font size using 'Font Size' labeled drop down box. A higher font size corresponds to bigger text size while teleprompting.Note: Text size set in the editor has no effect on the text size used while prompting.
2. Prompting
 - i) Start Prompting
 - a. Click Play button on the control Panel to start promptingOR
 - b. Go To Commands Tab
 - c. Click 'Play ' button 
 - ii) Pause
 - a. Go to Commands Tab
 - b. Click 'Pause' button OR
 - a. Click Pause on Control panel


iii) Change scrolling Direction

- a. Go to Commands Tab
- b. Click scroll up/scroll down to change scrolling direction to up/down
OR

- a. Click scroll up  /scroll down  button from control panel to change scrolling direction.


iv) Moving to previous Story

- a. Go to Commands Tab

- b. Click Skip button 

v) Skip Story


- a. Go to Commands Tab

- b. Click Skip button 

vi) Insert Breaking News

- a. Go to Commands Tab


- b. Click Breaking News button 


- c. Editor will open up. Write the story, and click Save button  on editor
- d. A dialogue box will open up. Specify the story name and position. Click OK.
- e. Story will be inserted at the specified position.

Note: Breaking news cannot be inserted at any position before queued/last played story. In case, the position specified lies before the queued/played story, then story will be inserted at the earliest possible position.

vii) Use Type N Prompt

- a. Go to Commands Tab

- b. Click Type N Prompt button 
- c. Editor will open up.
- d. Write the story on editor. It will be prompted as you type.

- e. When you have completed the story. Click 'Resume Run order'  button on editor or in Commands Tab.

- f. You will be prompted for the story name. Specify the story name and click Ok.

- g. Story will be saved in Type N prompt run order.

- h. When the entire Type N Prompt story has been prompted, the run order will resume from exact point, where control was shifted to Type N Prompt.


Note : Preview at the side of Type N Prompt Editor, is only indicative and may not be exact.

viii) Use Live Edit

- a. Go to Commands Tab

- b. Click Live Edit button 
- c. Editor will open up, with the currently playing story loaded into it.

- d. In this mode, the prompting continues as you edit.
- e. Changes in text will be reflected in prompting.

- f. When you are done editing, Click 'Resume Run order' button  on editor or Click 'Live Edit Complete' button on Commands Tab.
- g. When the entire story as visible in editor has been prompted, the run order will resume from the next story.

Note : Preview at the bottom of Type N Prompt Editor, is only indicative and may not be exact.

ix) Stop

- a. Go to Commands Tab

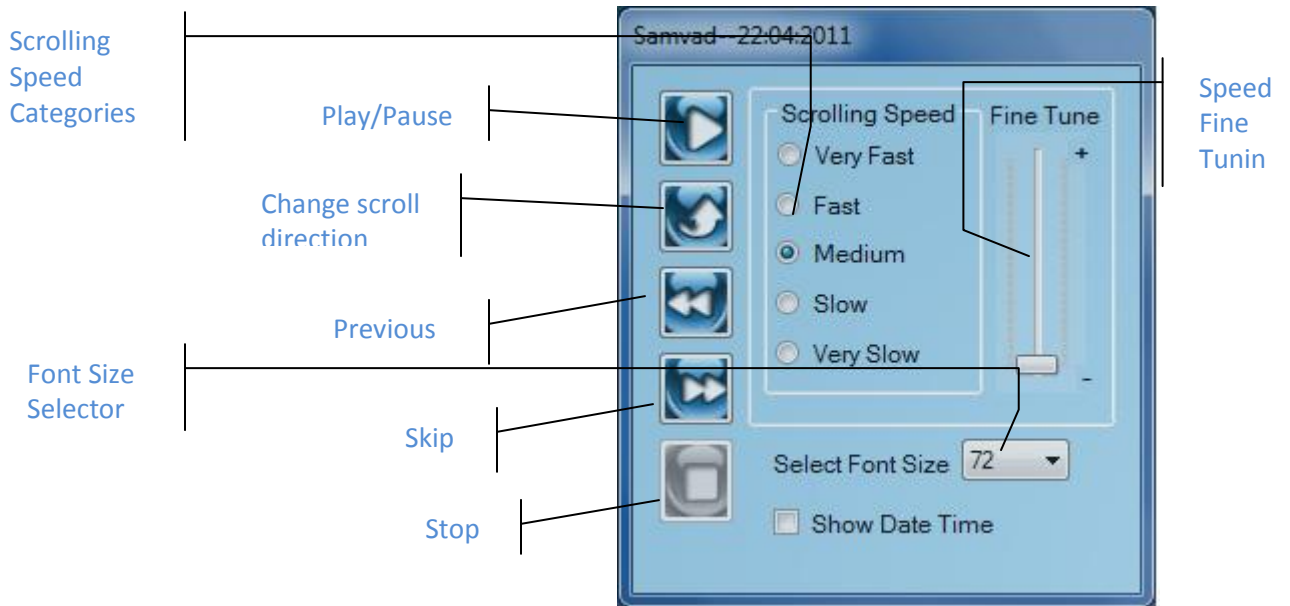
- b. Click Stop button. 

OR

- a. Click Stop on Control Panel.

x) Scrolling Speed Control

Scrolling Speed can be controlled from Control panel. Scrolling speed has been categorized in 5 categories: Very Fast, Fast, Medium, Slow and Very Slow. Within each category, speed can be further refined using the 'Fine Tune' track bar on the control panel.



Other Operations

1. Adding/Deleting/Modifying Users
 - a. Go To Settings Tab



- b. Click Users Button
- c. A dialogue box will open up.
- d. You can add, delete, modify users by clicking the appropriate buttons

2. Adding/Deleting/Modifying Readers
 - a. Go to Settings Tab



- b. Click Readers button
- c. A dialogue box will open up.
- d. You can add, delete, modify readers by clicking the appropriate buttons

Further details about reader operations is given under the section “Reader Management”.

Understanding Run Order in detail

SNo.	Story Status	Story Title	Estd Time	Block	Word Count	Start Time	Story Reader	W/M	Clip Name	Clip Time
1	InComplete	Tri-Valley case A law firms open letter to Obama	528	<input type="checkbox"/>	793	12:00:00 AM	Reader1	90	Obama letter	10
2	Complete	WikiLeaks founder Assanges lawyers fight extradition	168	<input type="checkbox"/>	422	12:08:58 AM	Reader2	150		0
3		Freed Google executive helped spark Egypt revolt	855	<input type="checkbox"/>	1283	12:11:46 AM	Reader2	90	Egypt revolt	15
4		How the Huffington Post became a \$315 mn killer app	964	<input checked="" type="checkbox"/>	1446	12:26:16 AM	Reader1	90		0
5		Gautam Gambhir Fire all the way	146	<input type="checkbox"/>	489	12:26:16 AM	Reader3	200	Gambhir Batting	17
6		Thomas dares SC, says it can't dislodge CVC	88	<input type="checkbox"/>	220	12:28:59 AM		150		0
7		nasa takes 3d pics of suns surface	52	<input type="checkbox"/>	175	12:30:27 AM	Reader3	200		0

1. **Sno:** Serial Number of the story
2. **Story Status:** A story can be marked incomplete by setting the story status to incomplete. Incomplete stories are highlighted, and can be easily distinguished from complete stories. Once a stories is complete its status can be set to complete and highlighting is removed.
3. **Story Title:** Name of the Story. A title cannot contain special characters: colon(:) and single

4. quote(') and length of story title should be less than 50 characters
5. **Estd Time:** Estimated time (in seconds) required for the entire story to be played. This time is calculated based on words in the story and reading speed specified for the story. Reading speed is displayed in the column W/M.
6. **Block Story:** A story can be blocked by checking the box under column Block. A blocked story is automatically skipped during prompting. All Blocked stories are marked in red.
7. **Word Count:** Number of words in the story
8. **Start Time:** Expected Start Time of the story. Expected Start Time of the first Story is 00:00:00. This time is only for reference purpose of the operator. Actual time of start may differ.
9. **Story Reader:** Stories can be assigned to readers defined in the system. Once a story has been assigned to a reader, settings defined for that reader i.e. background color, font color, text size, scrolling speed etc become automatically applicable to that story. For example if story " ABC" is assigned to reader1 and reader1 has font color specified at yellow and prompting speed specified to medium high, then story ABC will automatically be prompted in yellow text color, and prompting speed will automatically shift to medium high at the start of the story.
10. **W/M:** Reading Speed in words per minute of the reader assigned to story. If no reader is assigned, default reading speed is displayed.
11. **Clip Name:** If any audio/video clips are to be played after/during the script, then its name and length can be specified. Clip Name is to be specified in this column. Contents of this column are meant only for reference purpose
12. **Clip Length:** Length of the clip in seconds. This time is used in the calculation of start time of the next story.
13. **Story Progress Bar:** Story Progress bar shows the progress of story in playing conditions. It represents graphically the proportion of story that has already been prompted.

Reader Management

Readers in Samvad give the flexibility of storing different profiles. They can represent actual news anchors or can be used to represent frequently used prompting settings. Readers give the option of storing a combination of following settings:

- Background color
- Text Color
- Text Size
- Prompting Speed
- Reading Speed

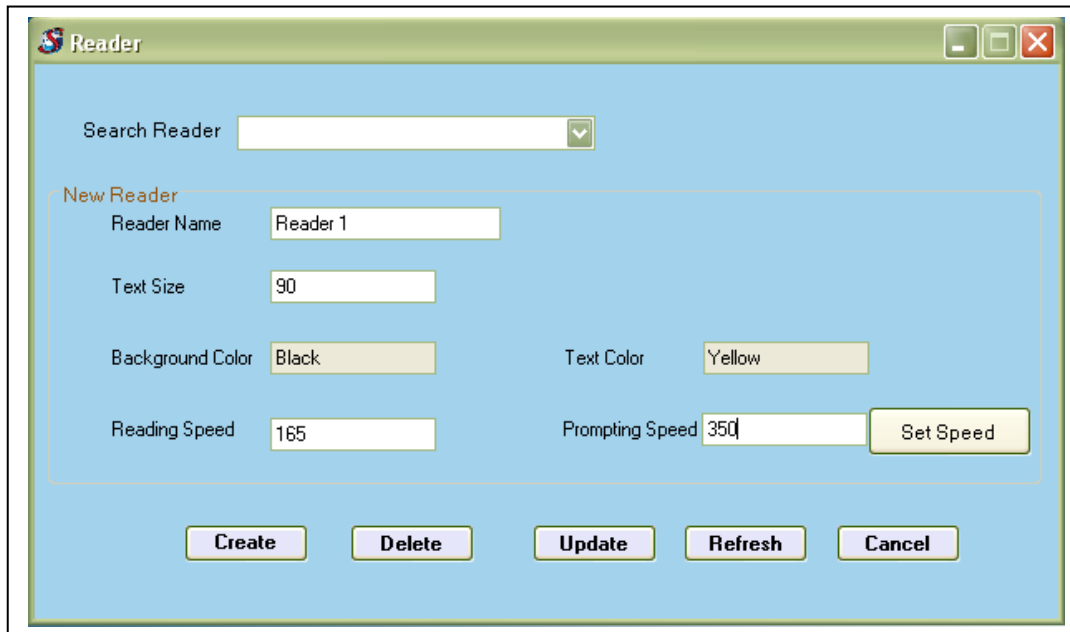
A reader can set any of the above settings to a particular value, and then that setting becomes automatically prevalent in stories assigned to that reader. For example if text color is set to red for reader XYZ, then all stories that have been assigned to reader XYZ will be prompted in red color.

A story which has not been assigned to any reader continues to be prompted at the default settings of the system.

A story can be assigned to a reader by selecting the reader in reader column of the run order. A story can be assigned to one reader at max.

Reader settings overrule the default formatting, but not the story formatting. For example: If a story has been saved with text color set to yellow, and then it is assigned to reader XYZ, whose text color is red, the story will be prompted in yellow, because story formatting overrules reader formatting. For reader text/background color formatting to be effective, stories should be saved in default font/background color.

To create and manage readers, go to settings tab and click 'Users' button.
Enter appropriate values in the following buttons, as per the the instructions given below:



The screenshot shows a window titled "Reader" with a search dropdown and a "New Reader" section. The "New Reader" section includes fields for Reader Name (Reader 1), Text Size (90), Background Color (Black), Text Color (Yellow), Reading Speed (165), and Prompting Speed (350). A "Set Speed" button is next to the Prompting Speed field. At the bottom are buttons for Create, Delete, Update, Refresh, and Cancel.

To create a new Reader, enter the values in new reader section and click create.

To update an existing reader, select the reader from the drop down list, then modify the relevant values in new reader section and click update to save the changes.

Properties in the new reader section are explained below:

Reader name: This the name of the reader. This name is to be used for selecting the reader in the drop down available on the run order. Two readers cannot have same name.

Text Size: This is the size of the font for the reader. Stories for the given reader will be automatically prompted in the specified text size irrespective of the font size selected at the control panel.

Background Color: This the color used at the background of the story text while prompting.

Text Color: This is the color of the story text .

Reading Speed: This is the raeding speed of the raeder in Words per Minute. This speed is used to calculate the expected time to be taken for the story. If no speed is specified, a default speed of 150 wpm is used to tiem the script.

Prompting Speed : This is the speed at which user would like the story to be prompted. If this is set , then as soon as the prompting shifts to a story of the given user, prompting speed will automatically change to the selected speed at the start of the story. Later on speed can be manually changed by the operator or the reader.

To set this speed, open a run order , and then press, preview speed. The run order will start to play. Adjust the speed according to the reader, and press set speed button on reader form. The prompting speed button will show a numerical equivalent of the selected speed. Press, create or update, whichecker appropriate to save the speed.

MOS Configuration

Samvad M.8.01 supports MOS protocol and can easily be used in integration with NCS for smooth operations.

To configure MOS on Samvad, Go to Settings Tab and select MOS button. It will open the following form where properties for MOS protocol can be configured.

	BuddyId	NCSIP	BuddyIP	UpperPort	Activated	Ncs Type
▶		192.168.0.3		10541	<input checked="" type="checkbox"/>	OCTOPUS
*					<input type="checkbox"/>	

MOS ID: This is the name for the teleprompter, by which other MOS devices can identify the teleprompter. If you are not sure what to enter here, write “SAMVAD” here.

However two MOS devices cannot have the same MOS ID, so if you are using two or more samvad teleprompters, write “SAMVAD1”, “SAMVAD2” and so on.

MOS IP Address: This is the IP address(IPv4) of the machine where samvad is running.

Lower Port : This the lower port for MOS protocol. If you are not sure of what to use here, write 10540. This is the default lower port.

Upper Port: This is the upper port for MOS protocol. If you are not sure of what to use here, write 10541. 10541 is the default upper port for MOS.

NCS Details:

NCS ID: This is MOS Id of the NCS.

BUDDY ID: This is the MOS Id of the buddy NCS. Buddy NCS are a feature of ENPS system. If your NCS does not have a buddy NCS, leave this field blank.

NCS IP: This is the IP address(IPv4) of the system running as NCS.

BUDDY IP: This is the IP address(IPv4) of the system running as Buddy NCS.

Upper Port: This is the upper port defined for the NCS.

Activated: Check this box to activate the settings for a given NCS. If this box is not checked, Samvad will not communicate the given NCS. Restart application after activating a NCS for settings to take effect.

NCS Type: Type of NCS such as ENPS,OCTOPUS etc.

Working With Accessories

1. USB Hand Control : Operations such as Play, Pause, Skip, Speed Control and Scrolling Direction can be controlled with the use of Hand Control. Hand Control is an optional item. If you have purchased Hand Control, you need to install it first.
 - a. Installation
 - i. Connect the Hand Control to a USB port on your System or Samvad Box
 - ii. Insert Samvad Installation CD/USB drive and open the installation menu.
 - iii. Click install ‘USB Controls’ button on the Samvad installation menu.
 - iv. Installation of USB controls will start. System may take a minute or two to complete installation.
 - v. After installations completes successfully, start Samvad software.
 - b. Operations
 - i. Go to Settings Tab.

 - ii. Click USB Hand Control button
 - iii. A notification should appear in the system tray, stating” USB Hand Control Enabled”. You can now use your hand control.
 - iv. If the notifications does not appear, un-plug your hand control. Re-insert your hand control in the USB port, and re-start Samvad software. Now try enabling the hand control again.
 - v. If the notification still doesn’t appear and your hand control is not functioning properly, then probably, USB Controls have not been installed properly. Re-perform the installation.
2. Foot Control: USB Foot control and Hand Control have the same installation. If you have already installed USB hand control, then proceed with the operations of USB foot control

, otherwise follow the steps given in USB hand Control installation, before proceeding with USB foot control Operations

a. Go to settings Tab.



b. Click USB foot control button .

c. A notification should appear in the system tray, stating" USB Foot Control Enabled". You can now use your foot control for controlling speed, play/pause and toggle direction.

d. If the notification does not appear, un-plug your foot control. Re-insert your foot control in the USB port, and re-start Samvad software. Now try enabling the foot control again.

e. If the notification still doesn't appear and your foot control is not functioning properly, then probably, USB Controls have not been installed properly. Re-perform the installation.

3. Serial Foot Control. Serial Foot Control does not need any installation. Simply connect the serial foot control to a serial port on your system and it is operational. If you do not have a serial port in your system, you may have to insert a serial card in your system.

a. After connecting the serial foot control to system. Go to Settings Tab.



b. Click USB Serial foot control button

c. Your serial control is now enabled